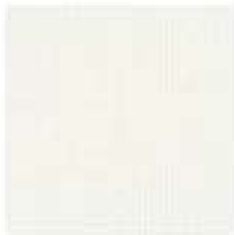


Acrylic plain coloured

Colour chart



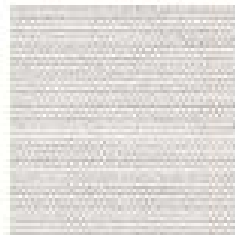
Der SonnenLichtManager



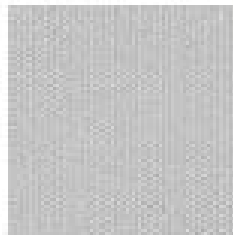
5800



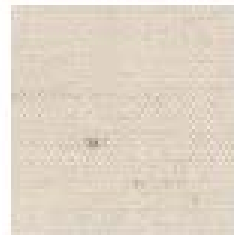
6240



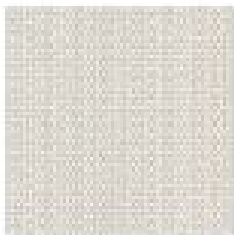
5300



6310



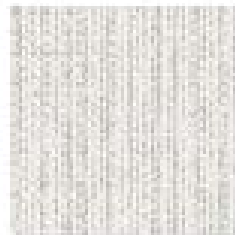
6200



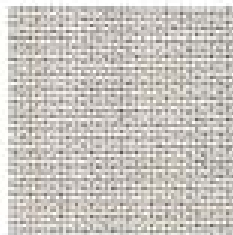
4024



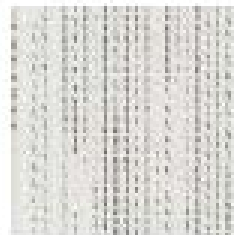
4015



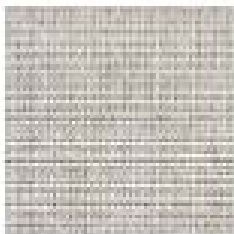
7940



7300



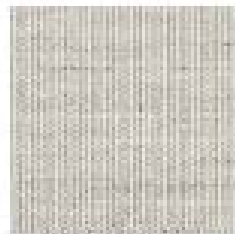
4040



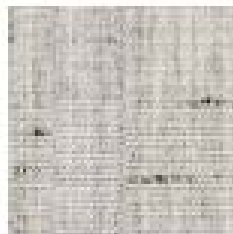
7941



6150



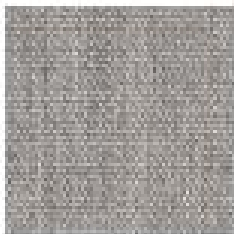
5301



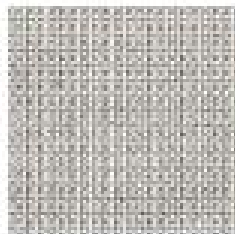
5302



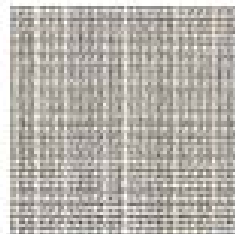
6400



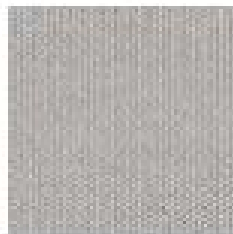
4010



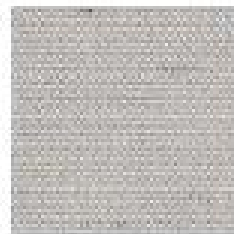
7220



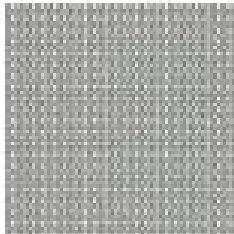
7942



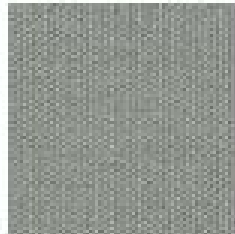
6470



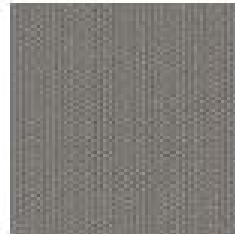
6420



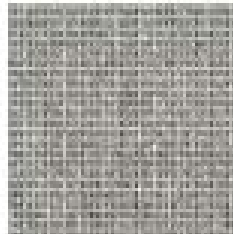
4023



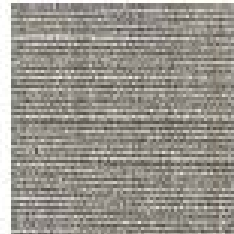
6260



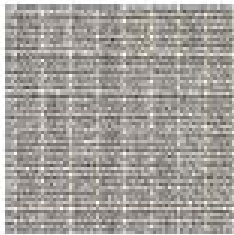
4004



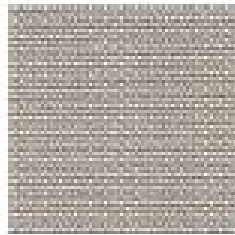
4041



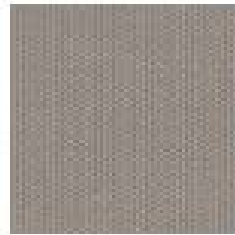
7944



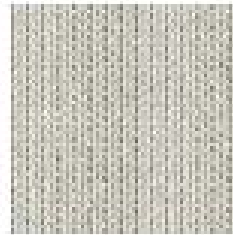
7610



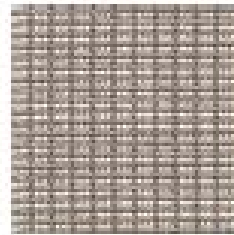
7310



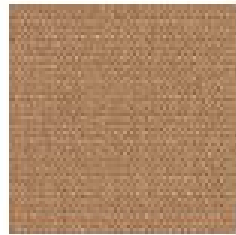
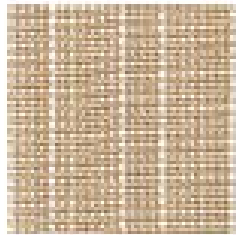
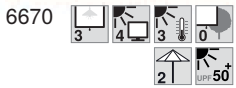
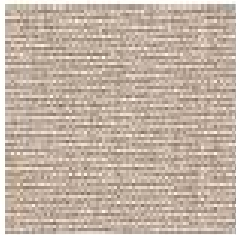
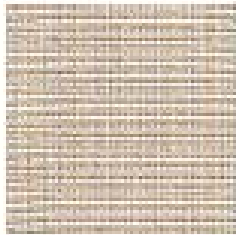
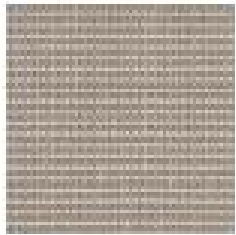
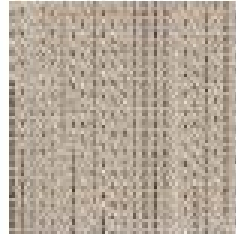
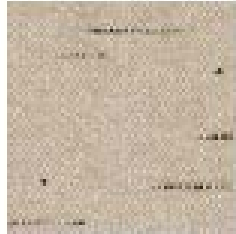
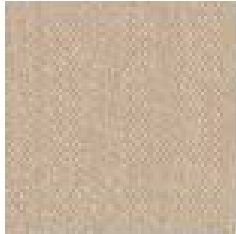
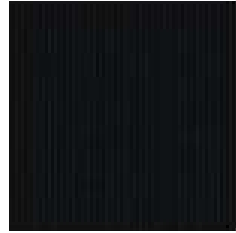
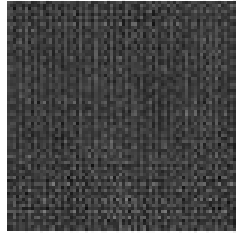
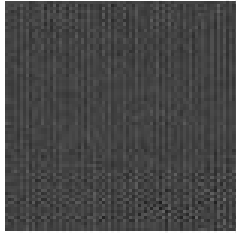
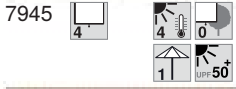
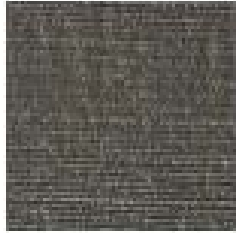
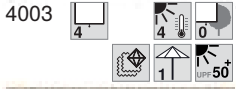
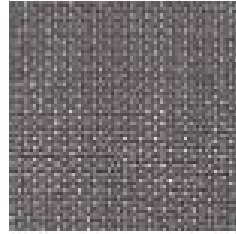
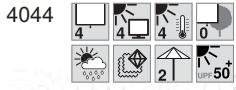
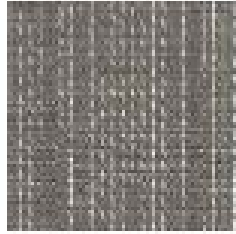
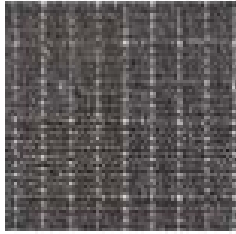
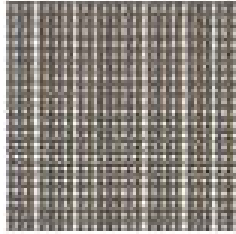
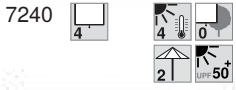
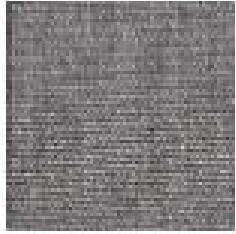
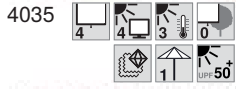
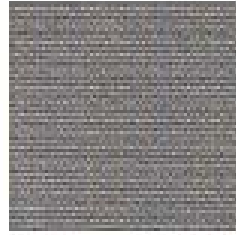
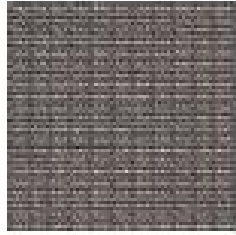
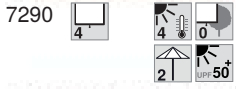
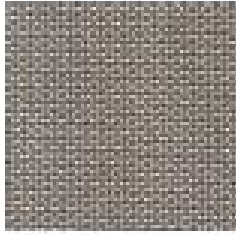
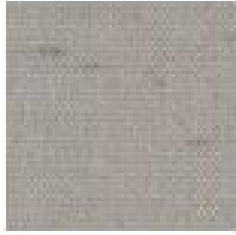
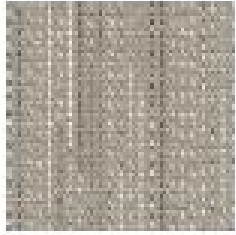
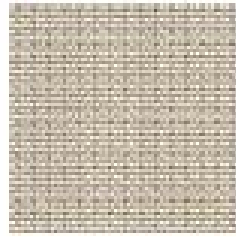
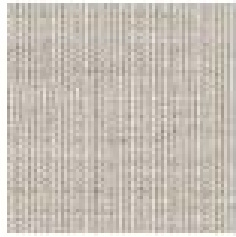
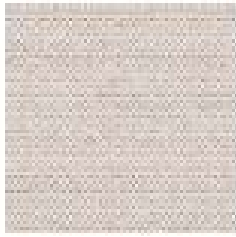
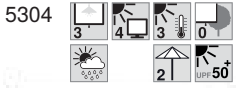
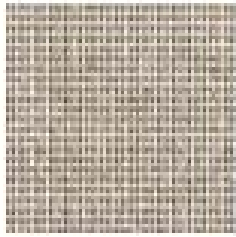
4009



5303

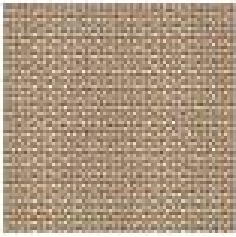


7180





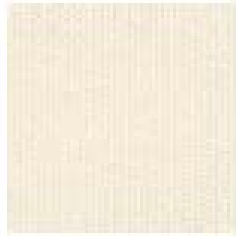
6680



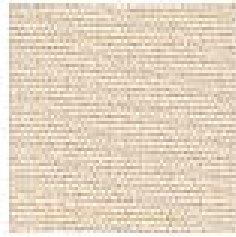
7090



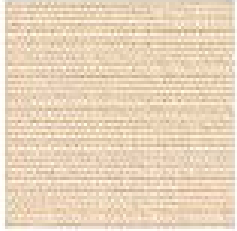
7948



6640



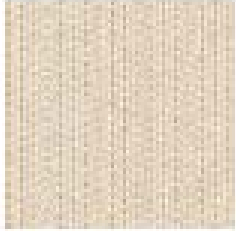
4026



4028



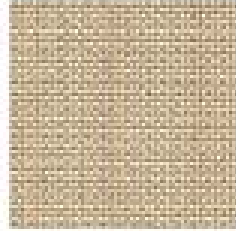
7949



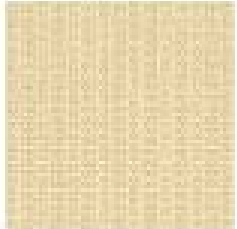
5310



6590



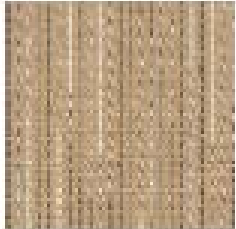
7170



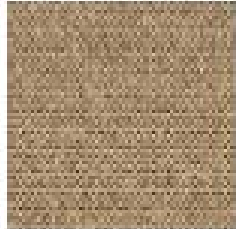
6550



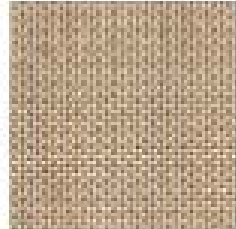
4011



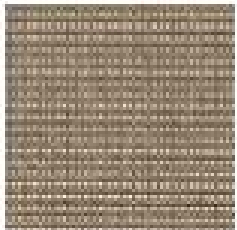
4046



4047



4025



4029



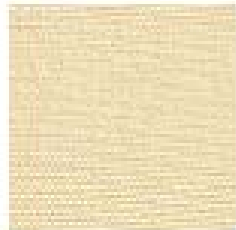
4048



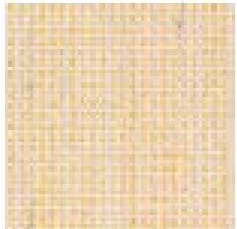
7020



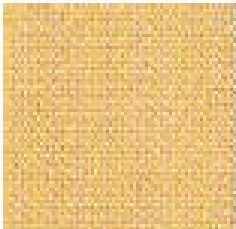
5860



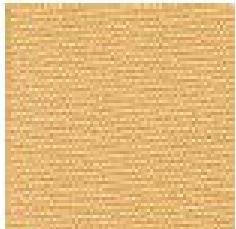
5312



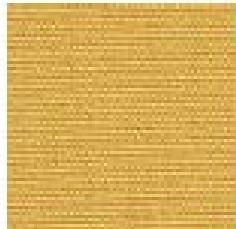
6490



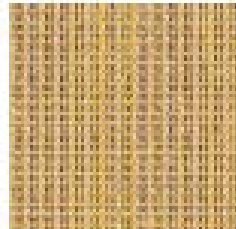
6800



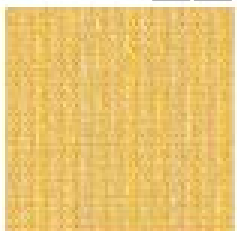
7380



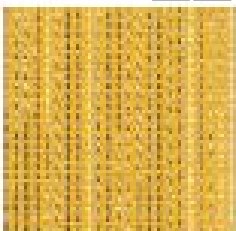
5315



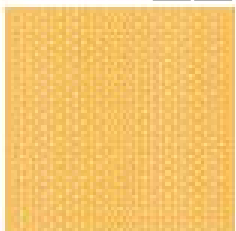
5316



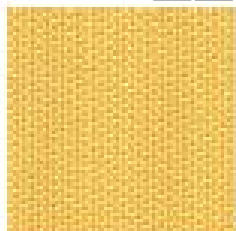
4049



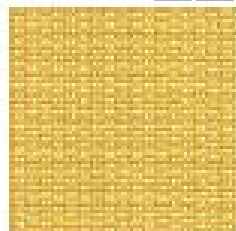
4050



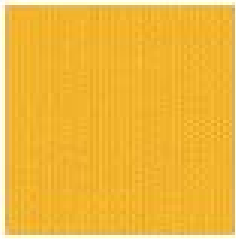
4019



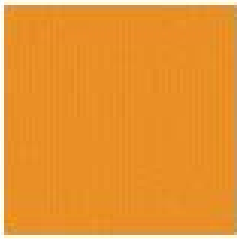
5317



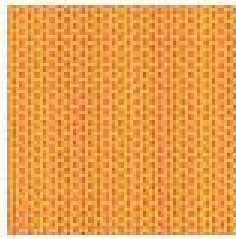
5318



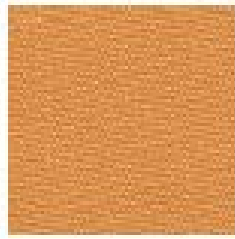
4013



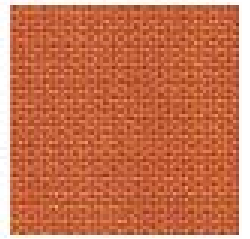
6100



6690



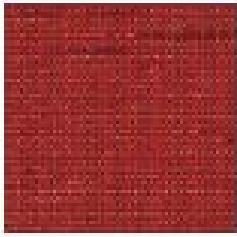
5320



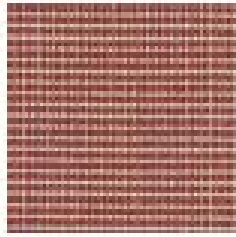
7400



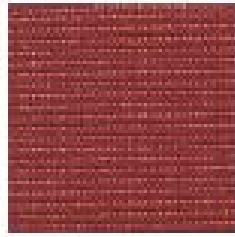
6740



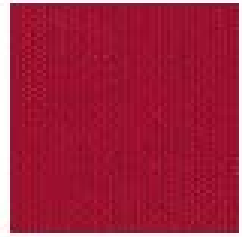
7952



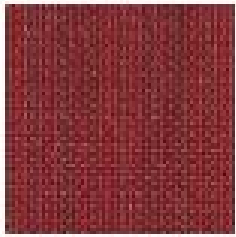
5900



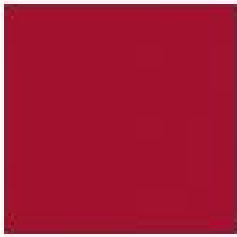
7953



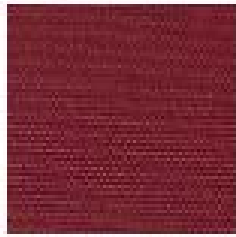
5890



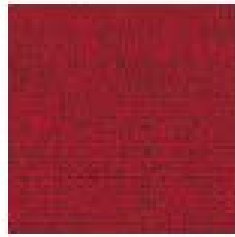
6840



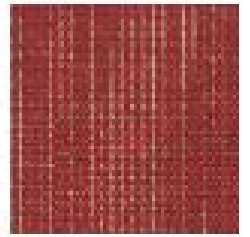
4006



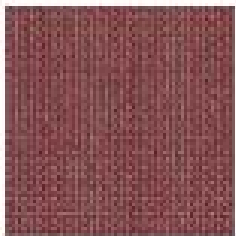
4034



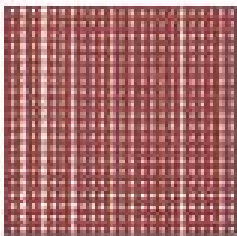
4054



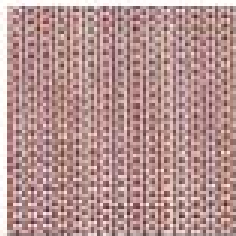
4055



4056



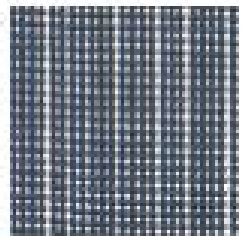
7954



7710



5330



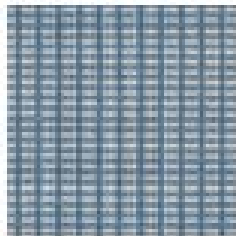
7951



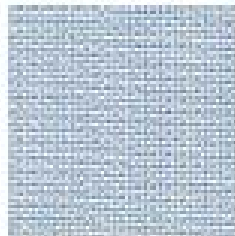
5331



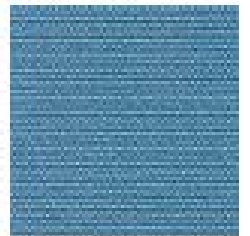
5332



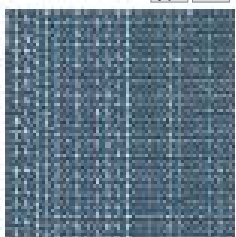
5550



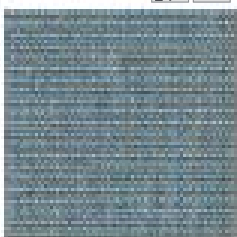
7730



7750



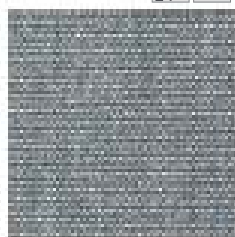
4052



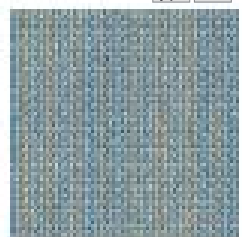
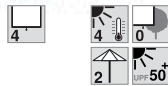
4053



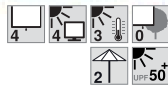
5334

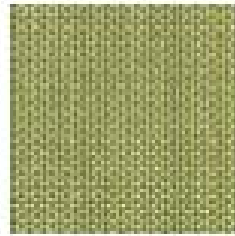
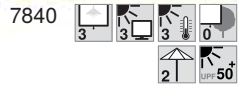
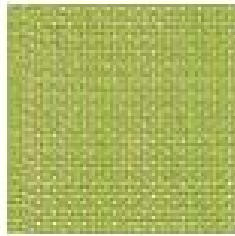
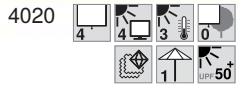
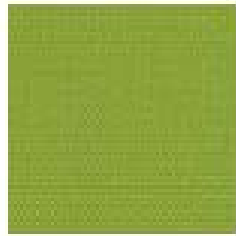
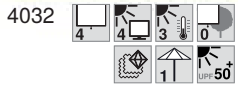
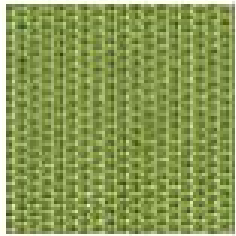
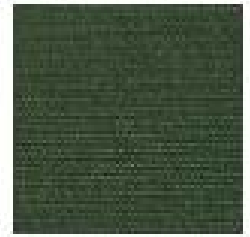
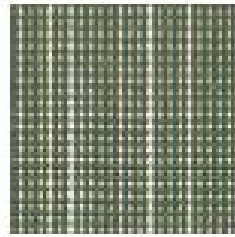
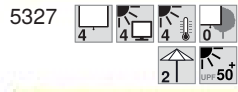
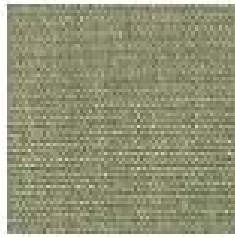
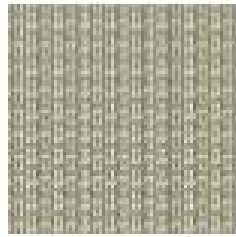
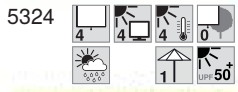
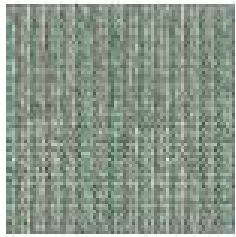
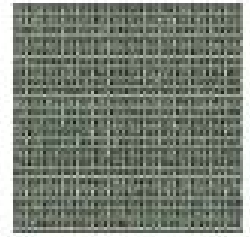
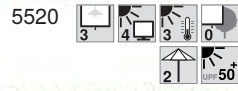
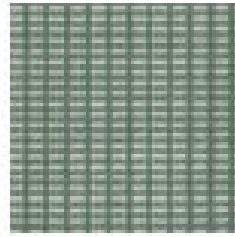
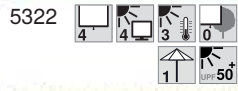
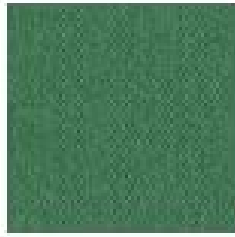
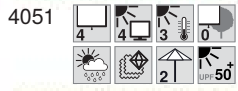
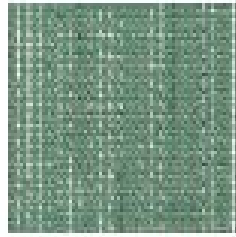
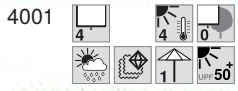
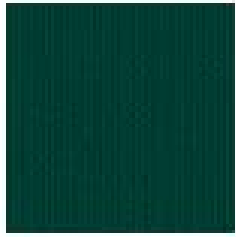
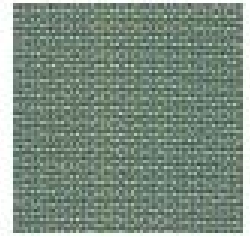
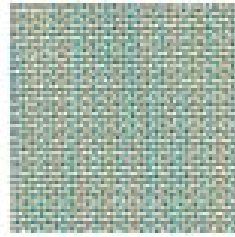
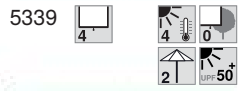
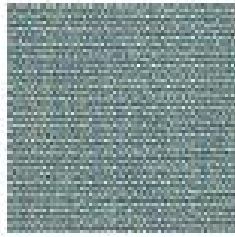
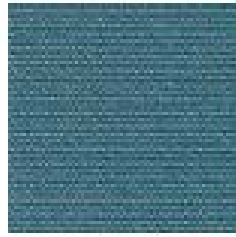
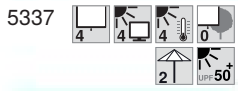
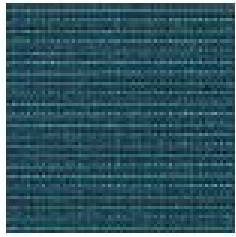


5335



5336





Description of acrylic fabrics

Acrylic

The tried and tested Standard acrylic awning fabric is manufactured from 100 % spinning nozzle dyed brand acrylic fabric. That means that the colour pigments – unlike in classic yarn dyeing – are applied during the fibre production. This ensures reliable protection against damaging UV radiation and permanently guarantees brilliant colours / constant weather- and light-fastness. Furthermore, the acrylic fabric is especially tear-resistant and also dirt- and water-repellent thanks to its impregnation with a special protective agent. The reliable solution for long-term outdoor use.

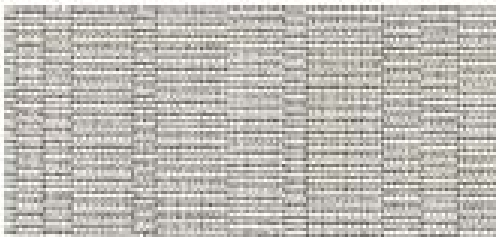
All Weather acrylic fabric



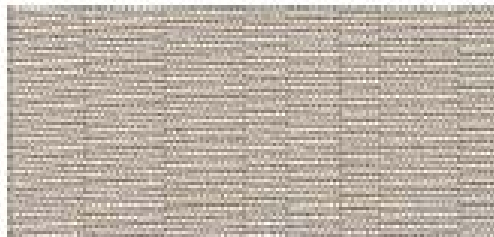
The high-grade All Weather acrylic fabric consists of 100 % brand acrylic fabric. The finish applied to the outside with a special transparent coating makes the fabric almost 100 % water-proof and even able to reliably withstand a water column of 1,000 mm. Manufactured from spinning nozzle dyed yarn, All Weather acrylic fabric is also light-fast, weather-proof and even tear-resistant. This means that the awning fabric provides reliable sun shading and glare control as well as temporary rain protection all in one.

Several designs are available in Standard acrylic fabric as well as in All Weather acrylic fabric, as shown in the table.

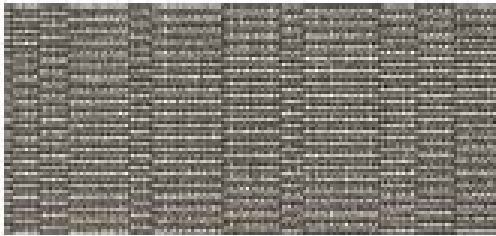
| Technical values | Acrylic | All Weather acrylic fabric |
|--|----------------------------|----------------------------|
| Fabric weight | 290 - 305 g/m ² | 340 g/m ² |
| Web width | 120 cm | 120 cm |
| Tear resistance in warp direction | 115 - 170 daN/5 cm | 150 daN/5 cm |
| Tear resistance in weft direction | 85 - 135 daN/5 cm | 100 daN/5 cm |
| Waterproofness | 300–500 mm WC | >1000 mm WC |
| Building materials class in accordance with DIN 4102-1 | – | – |



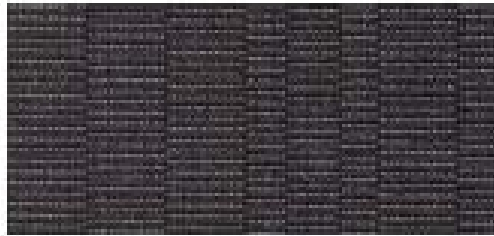
2930



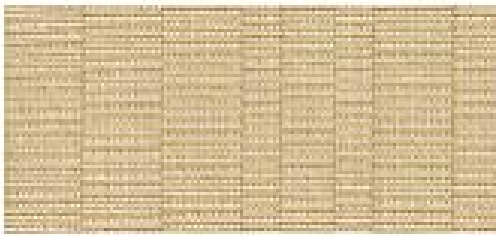
2808



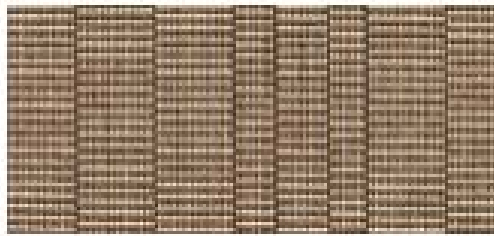
2931



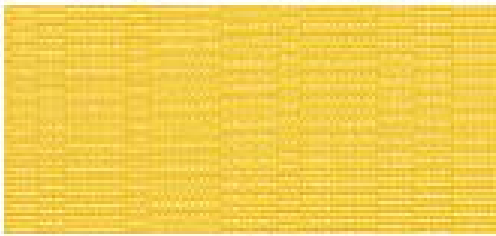
2809



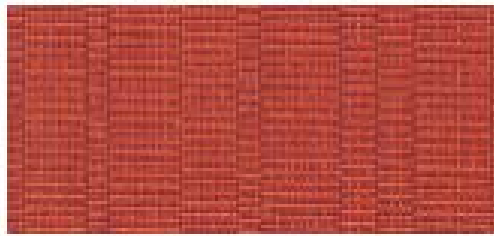
2806



2807



2949



2959



| Design no. | Visual privacy | Glare control (DIN EN 14501:2021) | Protection against overheating | View out | Light reflectance in % | Light transmittance in % | Light absorption coefficient in % | Solar reflectance in % | Solar transmittance in % | Solar absorptance coefficient in % | Colour rendering index | Available in All Weather acrylic fabric | Page |
|------------|----------------|-----------------------------------|--------------------------------|----------|------------------------|--------------------------|-----------------------------------|------------------------|--------------------------|------------------------------------|------------------------|---|------|
|------------|----------------|-----------------------------------|--------------------------------|----------|------------------------|--------------------------|-----------------------------------|------------------------|--------------------------|------------------------------------|------------------------|---|------|

Acrylic

Price range 1

| | | | | | | | | | | | | | |
|------|---|---|---|---|----|----|----|----|----|----|----|------|---|
| 2806 | 3 | 3 | 3 | 0 | 44 | 11 | 45 | 52 | 17 | 31 | 73 | | 7 |
| 2807 | 4 | 4 | 4 | 0 | 21 | 2 | 77 | 32 | 6 | 62 | 58 | | 7 |
| 2808 | 3 | 4 | 3 | 0 | 37 | 6 | 57 | 39 | 8 | 53 | 90 | | 7 |
| 2809 | 4 | 4 | 4 | 0 | - | 0 | - | 6 | 0 | 94 | 56 | | 7 |
| 2930 | 3 | 3 | 3 | 0 | 40 | 11 | 49 | 40 | 11 | 49 | 98 | | 7 |
| 2931 | 4 | 4 | 4 | 0 | 16 | 1 | 83 | 17 | 1 | 82 | 99 | | 7 |
| 2949 | 2 | 2 | 3 | 0 | 55 | 17 | 28 | 54 | 19 | 27 | 40 | | 7 |
| 2959 | 4 | 4 | 4 | 0 | 13 | 1 | 86 | 29 | 6 | 65 | 16 | | 7 |
| 4000 | 4 | 4 | 4 | 0 | 2 | 0 | 98 | 2 | 0 | 98 | 54 | | 3 |
| 4001 | 4 | - | 4 | 0 | 5 | 0 | 95 | 7 | 0 | 93 | 70 | 9574 | 6 |
| 4003 | 4 | - | 4 | 0 | 11 | 0 | 89 | 14 | 1 | 85 | 94 | | 3 |
| 4004 | 4 | 4 | 4 | 0 | 20 | 1 | 79 | 24 | 2 | 74 | 92 | | 2 |
| 4006 | 4 | 4 | 3 | 0 | 10 | 1 | 89 | 43 | 14 | 43 | 0 | | 5 |
| 4009 | 4 | 4 | 4 | 0 | 29 | 3 | 68 | 32 | 4 | 64 | 84 | | 2 |
| 4010 | 3 | 4 | 4 | 0 | 31 | 5 | 64 | 32 | 5 | 63 | 97 | 9568 | 2 |
| 4011 | 3 | 4 | 3 | 0 | 42 | 9 | 49 | 52 | 18 | 30 | 55 | | 4 |
| 4013 | 3 | 3 | 3 | 0 | 50 | 13 | 37 | 51 | 18 | 31 | 27 | 9573 | 5 |
| 4015 | 3 | 4 | 3 | 0 | 49 | 12 | 39 | 51 | 14 | 35 | 92 | | 2 |
| 4019 | 2 | 2 | 2 | 0 | 53 | 18 | 29 | 53 | 22 | 25 | 53 | | 4 |
| 4020 | 4 | 4 | 3 | 0 | 30 | 3 | 67 | 36 | 9 | 55 | 37 | | 6 |
| 4021 | 4 | 4 | 3 | 0 | 19 | 1 | 80 | 35 | 12 | 53 | 26 | | 3 |
| 4023 | 3 | 4 | 3 | 0 | 35 | 6 | 59 | 38 | 12 | 50 | 91 | | 2 |
| 4024 | 2 | 1 | 2 | 0 | 56 | 20 | 24 | 57 | 21 | 22 | 96 | | 2 |
| 4025 | 3 | 4 | 3 | 0 | 32 | 5 | 63 | 43 | 12 | 45 | 60 | | 4 |
| 4026 | 3 | 2 | 3 | 0 | 54 | 15 | 31 | 55 | 17 | 28 | 83 | | 4 |
| 4027 | 3 | 4 | 3 | 0 | 40 | 7 | 53 | 42 | 9 | 49 | 81 | | 3 |
| 4028 | 2 | 2 | 2 | 0 | 54 | 16 | 30 | 59 | 21 | 20 | 80 | | 4 |
| 4029 | 4 | 4 | 4 | 0 | 19 | 2 | 79 | 26 | 4 | 70 | 55 | | 4 |
| 4032 | 4 | 4 | 3 | 0 | 22 | 3 | 75 | 34 | 9 | 57 | 57 | | 6 |
| 4034 | 4 | 4 | 4 | 0 | 5 | 0 | 95 | 17 | 1 | 82 | 0 | | 5 |
| 4035 | 4 | 4 | 3 | 0 | 17 | 1 | 82 | 37 | 10 | 53 | 89 | | 3 |
| 4040 | 2 | 2 | 2 | 0 | - | 19 | - | 52 | 20 | 28 | 96 | 9550 | 2 |
| 4041 | 3 | 4 | 4 | 0 | - | 5 | - | 29 | 5 | 66 | 97 | 9571 | 2 |
| 4042 | 3 | 4 | 3 | 0 | - | 9 | - | 43 | 11 | 46 | 80 | | 3 |
| 4043 | 4 | 3 | 4 | 0 | - | 3 | - | 31 | 5 | 64 | 89 | 9551 | 3 |
| 4044 | 4 | 4 | 4 | 0 | - | 1 | - | 20 | 2 | 78 | 97 | 9552 | 3 |
| 4045 | 3 | 3 | 3 | 0 | - | 5 | - | 38 | 9 | 53 | 63 | 9553 | 3 |
| 4046 | 4 | 4 | 4 | 0 | - | 4 | - | 33 | 6 | 61 | 58 | 9554 | 4 |
| 4047 | 4 | 2 | 4 | 0 | - | 1 | - | 26 | 2 | 72 | 33 | | 4 |
| 4048 | 4 | 4 | 4 | 0 | - | 0 | - | 17 | 1 | 82 | - | | 4 |
| 4049 | 3 | 2 | 3 | 0 | - | 11 | - | 46 | 15 | 39 | 36 | | 4 |
| 4050 | 3 | 2 | 3 | 0 | - | 11 | - | 44 | 14 | 42 | 38 | 9555 | 4 |
| 4051 | 4 | 4 | 3 | 0 | - | 2 | - | 31 | 8 | 61 | 88 | 9558 | 6 |
| 4052 | 4 | 4 | 3 | 0 | - | 1 | - | 32 | 8 | 60 | 84 | 9559 | 5 |
| 4053 | 4 | 4 | 4 | 0 | - | 1 | - | 21 | 2 | 77 | 52 | | 5 |
| 4054 | 4 | 4 | 4 | 0 | - | 0 | - | 15 | 0 | 85 | - | 9572 | 5 |
| 4055 | 4 | 4 | 4 | 0 | - | 1 | - | 19 | 2 | 79 | 43 | 9557 | 5 |
| 4056 | 4 | 4 | 4 | 0 | - | 0 | - | 24 | 4 | 72 | - | | 5 |
| 5300 | 2 | - | 2 | 0 | - | 19 | - | 55 | 20 | 25 | 96 | | 2 |
| 5301 | 3 | 2 | 3 | 0 | - | 12 | - | 47 | 13 | 40 | 95 | | 2 |
| 5302 | 3 | 3 | 3 | 0 | - | 8 | - | 40 | 10 | 50 | 91 | | 2 |
| 5303 | 3 | 4 | 3 | 0 | - | 8 | - | 41 | 10 | 49 | 93 | | 2 |
| 5304 | 3 | 4 | 3 | 0 | - | 9 | - | 47 | 16 | 37 | 92 | 9570 | 3 |
| 5305 | 3 | 2 | 3 | 0 | - | 11 | - | 44 | 12 | 44 | 93 | | 3 |
| 5306 | 4 | 4 | 4 | 0 | - | 3 | - | 38 | 7 | 55 | 38 | | 3 |
| 5307 | 4 | 3 | 4 | 0 | - | 4 | - | 39 | 8 | 53 | 43 | | 3 |
| 5308 | 4 | 4 | 4 | 0 | - | 1 | - | 27 | 3 | 70 | 47 | | 3 |
| 5310 | 3 | 3 | 3 | 0 | - | 13 | - | 55 | 19 | 26 | 77 | | 4 |

| Design no. | Visual privacy | Glare control (DIN EN 14501:2021) | Protection against overheating | View out | Light reflectance in % | Light transmittance in % | Light absorption coefficient in % | Solar reflectance in % | Solar transmittance in % | Solar absorptance coefficient in % | Colour rendering index | Available in All Weather acrylic fabric | Page |
|------------|----------------|-----------------------------------|--------------------------------|----------|------------------------|--------------------------|-----------------------------------|------------------------|--------------------------|------------------------------------|------------------------|---|------|
| 5312 | 2 | 1 | 2 | 0 | 57 | 25 | 18 | 56 | 25 | 19 | - | | 4 |
| 5315 | 4 | 4 | 3 | 0 | 34 | 2 | 64 | 41 | 15 | 44 | - | | 4 |
| 5316 | 4 | 4 | 4 | 0 | - | 4 | - | 32 | 6 | 62 | 36 | | 4 |
| 5317 | 3 | 3 | 3 | 0 | 48 | 11 | 41 | 51 | 18 | 31 | - | | 4 |
| 5318 | 3 | - | 3 | 0 | 41 | 7 | 52 | 48 | 16 | 36 | - | | 4 |
| 5320 | 4 | 4 | 3 | 0 | 29 | 3 | 68 | 40 | 12 | 48 | - | | 5 |
| 5321 | 4 | 4 | 3 | 0 | 18 | 1 | 81 | 31 | 9 | 60 | - | | 6 |
| 5322 | 4 | 4 | 3 | 0 | - | 0 | - | 30 | 8 | 62 | - | | 6 |
| 5324 | 4 | 4 | 4 | 0 | - | 2 | - | 25 | 3 | 72 | 95 | 9569 | 6 |
| 5325 | 4 | 4 | 4 | 0 | - | 1 | - | 20 | 3 | 77 | 90 | | 6 |
| 5326 | 3 | 4 | 3 | 0 | 32 | 6 | 62 | 37 | 9 | 54 | - | | 6 |
| 5327 | 4 | 4 | 4 | 0 | 20 | 1 | 79 | 26 | 4 | 70 | - | | 6 |
| 5328 | 4 | 4 | 4 | 0 | 5 | 0 | 95 | 7 | 0 | 93 | - | | 6 |
| 5329 | 4 | 4 | 4 | 0 | 24 | 3 | 73 | 27 | 6 | 67 | - | | 6 |
| 5330 | 4 | 4 | 4 | 0 | 2 | 0 | 98 | 6 | 0 | 94 | - | | 5 |
| 5331 | 4 | 4 | 4 | 0 | 3 | 0 | 97 | 9 | 0 | 91 | - | | 5 |
| 5332 | 4 | 4 | 4 | 0 | 10 | 1 | 89 | 16 | 3 | 81 | - | | 5 |
| 5334 | 4 | 4 | 4 | 0 | - | 0 | - | 10 | 0 | 90 | - | | 5 |
| 5335 | 4 | - | 4 | 0 | 20 | 1 | 79 | 22 | 2 | 76 | - | | 5 |
| 5336 | 4 | 4 | 3 | 0 | - | 1 | - | 39 | 11 | 50 | 81 | | 5 |
| 5337 | 4 | 4 | 4 | 0 | 7 | 0 | 93 | 17 | 3 | 80 | - | | 6 |
| 5339 | 4 | - | 4 | 0 | 19 | 1 | 80 | 26 | 4 | 70 | - | | 6 |
| 5520 | 3 | 4 | 3 | 0 | - | 6 | - | 42 | 12 | 46 | 93 | | 6 |
| 5550 | 3 | 4 | 3 | 0 | - | 5 | - | 43 | 13 | 44 | 91 | | 5 |
| 5800 | 2 | 2 | 2 | 0 | 64 | 27 | 9 | 64 | 27 | 9 | 98 | | 2 |
| 5840 | 3 | 4 | 3 | 0 | 38 | 7 | 55 | 43 | 11 | 46 | 58 | | 3 |
| 5850 | 4 | 4 | 4 | 0 | 27 | 3 | 70 | 31 | 5 | 64 | 71 | | 3 |
| 5860 | 4 | 4 | 4 | 0 | 12 | 0 | 88 | 14 | 0 | 86 | 57 | | 4 |
| 5890 | 4 | 4 | 3 | 0 | 8 | 0 | 92 | 37 | 10 | 53 | - | | 5 |
| 5900 | 4 | 4 | 4 | 0 | 22 | 3 | 75 | 33 | 7 | 60 | 45 | | 5 |
| 6100 | 3 | 4 | 3 | 0 | 36 | 6 | 58 | 49 | 17 | 34 | 13 | | 5 |
| 6150 | 3 | 2 | 3 | 0 | 46 | 12 | 42 | 47 | 13 | 40 | 96 | | 2 |
| 6200 | 2 | 2 | 2 | 0 | 53 | 18 | 29 | 54 | 20 | 26 | - | | 2 |
| 6220 | 4 | 3 | 4 | 0 | 31 | 4 | 65 | 36 | 6 | 58 | 87 | | 3 |
| 6240 | 2 | - | 2 | 0 | 60 | 26 | 14 | 61 | 30 | 9 | 97 | | 2 |
| 6260 | 4 | 4 | 4 | 0 | - | 2 | - | 32 | 3 | 65 | 94 | | 2 |
| 6310 | 2 | - | 3 | 0 | 53 | 18 | 29 | 54 | 19 | 27 | 98 | | 2 |
| 6320 | 2 | 2 | 2 | 0 | 49 | 16 | 35 | 55 | 22 | 23 | 89 | | 3 |
| 6370 | 4 | 4 | 4 | 0 | 7 | 0 | 93 | 9 | 0 | 91 | 88 | | 3 |
| 6390 | 4 | 4 | 4 | 0 | 6 | 0 | 94 | 7 | 0 | 93 | 97 | | 3 |
| 6400 | 3 | 2 | 3 | 0 | 37 | 10 | 53 | 36 | 10 | 54 | 97 | | 2 |
| 6420 | 3 | 4 | 3 | 0 | 36 | 5 | 59 | 41 | 9 | 50 | 92 | | 2 |
| 6450 | 4 | 4 | 4 | 0 | 10 | 0 | 90 | 20 | 2 | 78 | 15 | | 6 |
| 6470 | 3 | 4 | 4 | 0 | 33 | 5 | 62 | 37 | 8 | 55 | 93 | | 2 |
| 6490 | 2 | 2 | 2 | 0 | 61 | 22 | 17 | 61 | 23 | 16 | 83 | | 4 |
| 6550 | 2 | - | 2 | 0 | 53 | 19 | 28 | 56 | 23 | 21 | 76 | | 4 |
| 6590 | 3 | 4 | 3 | 0 | 40 | 9 | 51 | 43 | 13 | 44 | - | | 4 |
| 6640 | 2 | 0 | 2 | 0 | 63 | 28 | 9 | 62 | 27 | 11 | 92 | | 4 |
| 6670 | 3 | 4 | 3 | 0 | 43 | 7 | 50 | 52 | 14 | 34 | 79 | | 3 |
| 6680 | 4 | 4 | 4 | 0 | 21 | 1 | 78 | 27 | 4 | 69 | - | | 4 |
| 6690 | 3 | 4 | 3 | 0 | - | 9 | - | 49 | 17 | 34 | 21 | | 5 |
| 6740 | 4 | 4 | 3 | 0 | 9 | 0 | 91 | 34 | 8 | 58 | 0 | | 5 |
| 6800 | 3 | 3 | 3 | 0 | - | 13 | - | 49 | 16 | 35 | 52 | | 4 |
| 6840 | 4 | 4 | 4 | 0 | 10 | 1 | 89 | 27 | 6 | 67 | - | | 5 |
| 7020 | 4 | - | 4 | 0 | 8 | 0 | 92 | 13 | 2 | 85 | 75 | | 4 |
| 7090 | 4 | 4 | 3 | 0 | 26 | 3 | 71 | 35 | 10 | 55 | 64 | | 4 |
| 7170 | 3 | 4 | 3 | 0 | 40 | 9 | 51 | 42 | 11 | 47 | 69 | | 4 |
| 7180 | 3 | 4 | 3 | 0 | 31 | 6 | 63 | 45 | 14 | 41 | 92 | | 2 |
| 7190 | 4 | 4 | 4 | 0 | 14 | 1 | 85 | 21 | 3 | 76 | 88 | | 3 |
| 7220 | 3 | 3 | 3 | 0 | 38 | 11 | 51 | 39 | 11 | 50 | 98 | | 2 |
| 7230 | 4 | 4 | 4 | 0 | 11 | 0 | 89 | 13 | 0 | 87 | 96 | | 3 |

Manufacturer's data according to DIN EN 14501 and DIN EN 410

The photometric data are recorded by reputable institutes and are considered to be standard values. Tolerances in the measurement procedure and batch-related variations from the samples can lead to deviations in the determined values, for which we cannot assume liability. Furthermore, these values were determined at the time of document preparation; this data is subject to deviations due to more recent measurements.

No responsibility is taken for the accuracy of this information. Slight colour deviations may occur. Processing (e.g. longitudinal/transverse and visible seam) according to valid TechData.

| Design no. | Visual privacy | Glare control (DIN EN 14501:2021) | Protection against overheating | View out | Light reflectance in % | Light transmittance in % | Light absorption coefficient in % | Solar reflectance in % | Solar transmittance in % | Solar absorbance coefficient in % | Colour rendering index | Available in All Weather acrylic fabric | Page |
|------------|----------------|-----------------------------------|--------------------------------|----------|------------------------|--------------------------|-----------------------------------|------------------------|--------------------------|-----------------------------------|------------------------|---|------|
| 7240 | 4 | - | 4 | 0 | 17 | 1 | 82 | 17 | 1 | 82 | 99 | | 3 |
| 7290 | 4 | - | 4 | 0 | 18 | 1 | 81 | 21 | 3 | 76 | 85 | | 3 |
| 7300 | 2 | - | 3 | 0 | 50 | 16 | 34 | 50 | 16 | 34 | 97 | | 2 |
| 7310 | 3 | 4 | 4 | 0 | 29 | 4 | 67 | 33 | 7 | 60 | 91 | | 2 |
| 7380 | 3 | - | 3 | 0 | 41 | 8 | 51 | 45 | 14 | 41 | 31 | | 4 |
| 7400 | 4 | - | 4 | 0 | 16 | 0 | 84 | 35 | 7 | 58 | - | | 5 |
| 7600 | 4 | 4 | 4 | 0 | 11 | 1 | 88 | 11 | 1 | 88 | 96 | | 3 |
| 7610 | 4 | 4 | 4 | 0 | 27 | 4 | 69 | 27 | 4 | 69 | 93 | | 2 |
| 7710 | 3 | 4 | 3 | 0 | 28 | 8 | 64 | 36 | 10 | 54 | 82 | | 5 |
| 7730 | 2 | 2 | 2 | 0 | 55 | 16 | 29 | 47 | 22 | 31 | 84 | | 5 |
| 7750 | 4 | 4 | 4 | 0 | 16 | 1 | 83 | 28 | 6 | 66 | 1 | | 5 |
| 7840 | 3 | 3 | 3 | 0 | 34 | 4 | 62 | 41 | 11 | 48 | 71 | | 6 |
| 7860 | 3 | 4 | 3 | 0 | 36 | 6 | 58 | 48 | 15 | 37 | 77 | | 6 |
| 7940 | 2 | 2 | 3 | 0 | - | 18 | - | 53 | 19 | 28 | 95 | | 2 |
| 7941 | 2 | - | 2 | 0 | 58 | 20 | 22 | 58 | 21 | 21 | - | | 2 |
| 7942 | 3 | 4 | 4 | 0 | 34 | 6 | 60 | 34 | 7 | 59 | 97 | | 2 |
| 7943 | 4 | 4 | 4 | 0 | 20 | 4 | 76 | 20 | 4 | 76 | 97 | | 3 |
| 7944 | 4 | - | 4 | 0 | 23 | 2 | 75 | 26 | 3 | 71 | - | | 2 |
| 7945 | 4 | - | 4 | 0 | 7 | 1 | 92 | 8 | 1 | 91 | - | | 3 |
| 7946 | 3 | 3 | 3 | 0 | 41 | 11 | 48 | 46 | 13 | 41 | - | | 3 |
| 7947 | 3 | 4 | 3 | 0 | 35 | 6 | 59 | 41 | 10 | 49 | 49 | | 3 |
| 7948 | 3 | - | 3 | 0 | 35 | 7 | 58 | 41 | 12 | 47 | - | | 4 |
| 7949 | 3 | 2 | 3 | 0 | - | 12 | - | 49 | 15 | 36 | 79 | | 4 |
| 7950 | 4 | 4 | 4 | 0 | 20 | 3 | 77 | 21 | 4 | 75 | 98 | | 6 |
| 7951 | 4 | 4 | 4 | 0 | 18 | 3 | 79 | 24 | 4 | 72 | 72 | | 5 |
| 7952 | 4 | 4 | 4 | 0 | - | 0 | - | 20 | 1 | 79 | - | | 5 |
| 7953 | 4 | 4 | 4 | 0 | 8 | 0 | 92 | 26 | 4 | 70 | - | | 5 |
| 7954 | 4 | 4 | 4 | 0 | 18 | 3 | 79 | 24 | 4 | 72 | 69 | | 5 |

All Weather acrylic fabric

| Price range 2 | | | | | | | | | | | | |
|---------------|---|---|---|---|---|----|---|----|----|----|----|--|
| 9550* | 2 | 2 | 2 | 0 | - | 19 | - | 52 | 20 | 28 | 96 | |
| 9551* | 4 | 3 | 4 | 0 | - | 3 | - | 31 | 5 | 64 | 89 | |
| 9552* | 4 | 4 | 4 | 0 | - | 1 | - | 20 | 2 | 78 | 97 | |
| 9553* | 3 | 3 | 3 | 0 | - | 5 | - | 38 | 9 | 53 | 63 | |
| 9554* | 4 | 4 | 4 | 0 | - | 4 | - | 33 | 6 | 61 | 58 | |
| 9555* | 3 | 2 | 3 | 0 | - | 11 | - | 44 | 14 | 42 | 38 | |
| 9556* | 4 | 3 | 3 | 0 | - | 3 | - | 40 | 12 | 48 | 16 | |
| 9557* | 4 | 4 | 4 | 0 | - | 1 | - | 19 | 2 | 79 | 43 | |
| 9558* | 4 | 4 | 3 | 0 | - | 2 | - | 31 | 8 | 61 | 88 | |
| 9559* | 4 | 4 | 3 | 0 | - | 1 | - | 32 | 8 | 60 | 84 | |
| 9568* | 3 | 4 | 4 | 0 | - | 5 | - | 32 | 5 | 63 | 97 | |
| 9569* | 4 | 4 | 4 | 0 | - | 2 | - | 23 | 3 | 74 | 97 | |
| 9570* | 3 | 4 | 4 | 0 | - | 6 | - | 41 | 8 | 51 | 98 | |
| 9571* | 3 | 4 | 4 | 0 | - | 5 | - | 29 | 5 | 66 | 97 | |
| 9572* | 4 | 4 | 4 | 0 | - | 0 | - | 15 | 0 | 85 | - | |
| 9573* | 3 | 3 | 3 | 0 | - | 13 | - | 51 | 18 | 31 | 30 | |
| 9574* | 4 | 4 | 4 | 0 | - | 0 | - | 8 | 0 | 92 | - | |

Manufacturer's data according to DIN EN 14501 and DIN EN 410

The photometric data are recorded by reputable institutes and are considered to be standard values. Tolerances in the measurement procedure and batch-related variations from the samples can lead to deviations in the determined values, for which we cannot assume liability. Furthermore, these values were determined at the time of document preparation; this data is subject to deviations due to more recent measurements.

No responsibility is taken for the accuracy of this information. Slight colour deviations may occur. Processing (e.g. longitudinal/transverse and visible seam) according to valid TechData.

* Designs not as fabric patterns in the colour chart

Thermal and visual fabric properties in accordance with DIN EN 14501

Protection against overheating

Use on window, patio and conservatory awnings

The capacity of the external fabric to prevent heat build-up in the room. Thermal protection glass ($U_g = 1.2 \text{ W}/(\text{m}^2\text{K})$; $g = 59\%$) is used for classification, the value g_{tot} is calculated in accordance with DIN EN 13 363-1.

| Picto | Description |
|-------|---|
| | Not relevant for external fabrics. |
| | Not relevant for external fabrics. |
| | The sun shading system effectively prevents heat build-up in the room. |
| | The sun shading system very effectively prevents heat build-up in the room. |
| | The sun shading system maximally prevents heat build-up in the room. |

Glare control

The capacity of the fabric to reduce solar radiation on the workspace and prevent direct view of the sun.

| Picto | Description | Remarks on facade side |
|-------|---|--|
| | No glare control. | |
| | Glare control is very limited and only suitable for few applications, e.g. north facade, when glare from opposite facades is impossible. | Suitable for north side; east, south and west sides not suitable for computer workstations |
| | Glare control is almost always ensured and only insufficient for few applications, e.g. computer workstations directly facing the window. | Suitable for east, south, west facade |
| | Glare control is virtually always ensured and only insufficient for extreme applications, e.g. computer workstations directly facing the window and CAD applications. | Suitable for east, south, west facade |
| | Full glare control independent of outside conditions such as workstation orientation, e.g. black-out qualities. Please note that no view out is possible. | Suitable for east, south, west facade |

| Picto | Description |
|-------|---|
| | Caravita parasols: designs in stock with short delivery times |
| | Caravita parasols: designs with longer delivery times |
| | Lumera acrylic fabric is woven with special CBA fibres (Clean Brilliant Acrylic). The smoother and denser surface makes colours appear richer and more vibrant. |
| | The Lumera 3D effect is achieved by switching from smooth CBA fibres to hair-structured staple fibre yarns in the warp direction. |

Visual privacy

The capacity of the fabric to prevent a person inside the room from being seen from the outside under normal night-time lighting conditions.

| Picto | Description |
|-------|---|
| | No visual privacy is ensured. People are clearly discernible. |
| | Only little visual privacy is ensured. People are still discernible. |
| | Visual privacy is ensured, but shadows can always be seen and people can be discerned under unfavourable lighting conditions. |
| | Visual privacy is minimally limited. Shadows can only be discerned at a short distance from the fabric, e.g. people inside the room at a distance of < 1 m. |
| | Complete visual privacy. |

View out

The capacity of the fabric to allow a view out when extended.

| Picto | Description |
|-------|--|
| | There is no view out. |
| | The view out is extremely limited. Silhouettes are noticeable. |
| | The view out is limited. Silhouettes are easy to see. |
| | The view out is minimally limited, e.g. people can be seen at a 10 m distance. |
| | The view out is nearly unobstructed. |

Terms and definitions

Light reflectance ρ_v = the percentage of the light reaching the awning (wavelength range from 380 nm to 780 nm) which is reflected.

Light transmittance T_v = the percentage of the light reaching the awning which passes through (how bright it is behind the sun shading system).

Light absorption coefficient α_v = the percentage of the light reaching the awning that is absorbed.

Solar reflectance ρ_e = the percentage of the total radiation reaching the awning (UV + light + infrared, wavelength range from 300 nm to 2500 nm) that is reflected.

Solar transmittance T_e = the percentage of the total radiation reaching the awning that passes through.

Solar absorptance coefficient α_e = the percentage of the total radiation reaching the awning which is absorbed and transformed into heat.

Colour rendering index R_a = the authenticity of the colour rendering. The higher the colour rendering index R_a , the more authentically colours are rendered. The value can be a maximum of 100.